



STATE OF HAWAI'I

**Office of Planning
& Sustainable Development**



Unlocking Federal Funds to Advance Hawai'i's Economic Future

City & County of Honolulu Economic Revitalization Commission

May 21, 2024



U.S. Economic Development Administration (EDA) Funds Critical Local Economic Development and Disaster Recovery* Projects

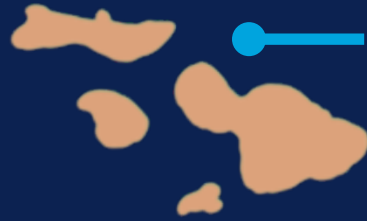


- Kaua'i Economic Development Board, Creative Tech Center (\$0.1m, 2017)

Construction



- MA'O (Waianae Redevelopment Corporation), Produce Processing and Training Facility (\$2.9m, 2017)
- HTDC, Entrepreneurs Sandbox (\$3m, 2014)
- UH, Culinary Institute of the Pacific (\$2.42m, 2012)
- FTZ, Trade Business Incubator (\$3m, 2010)



- Maui Academy of Performing Arts, Performing Arts Campus (\$3.53m, 2022)*
- MEDB, Space Cluster Development (\$0.44m, 2019)
- UH, Maui Food Innovation Center (\$0.21m, 2018)

Non-Construction

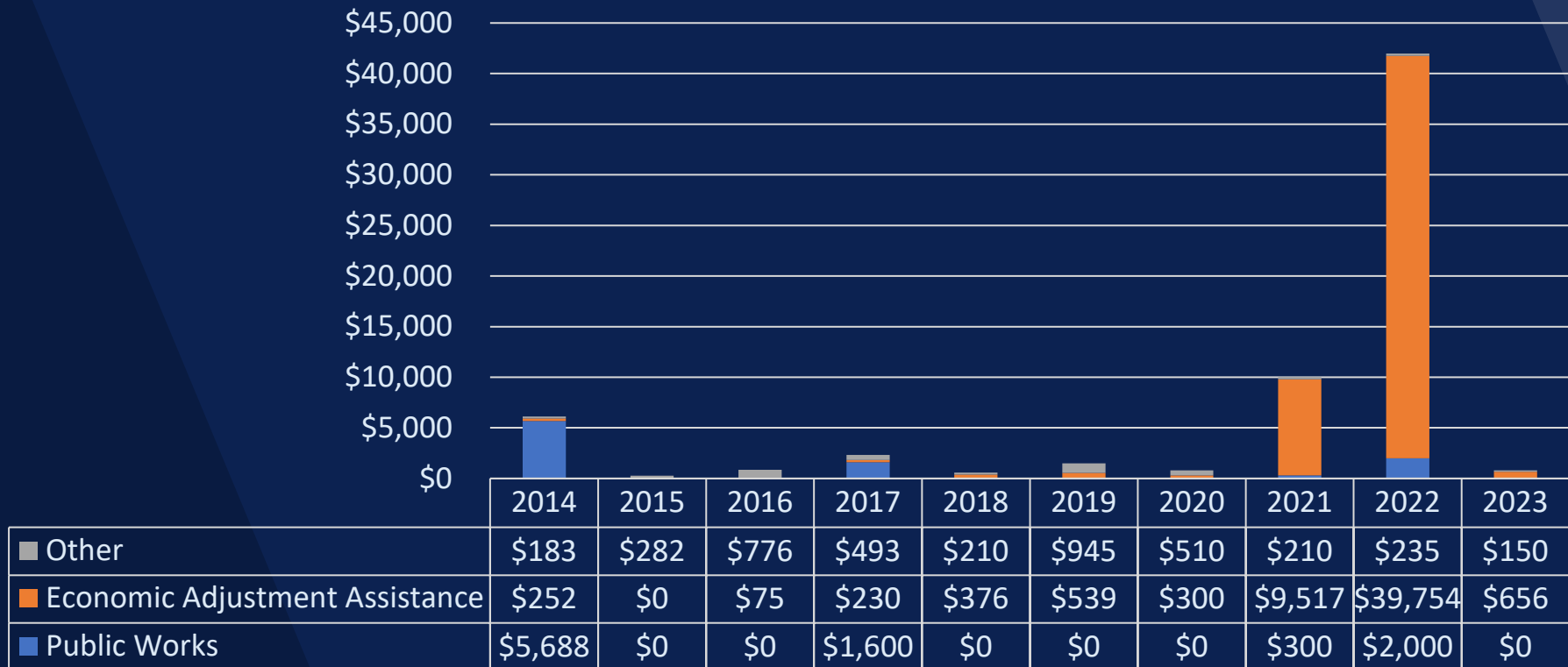
- UH, Pacific Business Center Program (\$0.3m, 2020)*
- OEDB, APEC Business Development (\$0.25m, 2011)



- County of Hawai'i, Disaster Recovery Plan (\$0.25m, 2018)*
- Kohala Center, Accelerator Renovation (\$2.18m, 2014)
- NELHA, Aquaculture / Ocean Tech Incubator (\$3m, 2012)

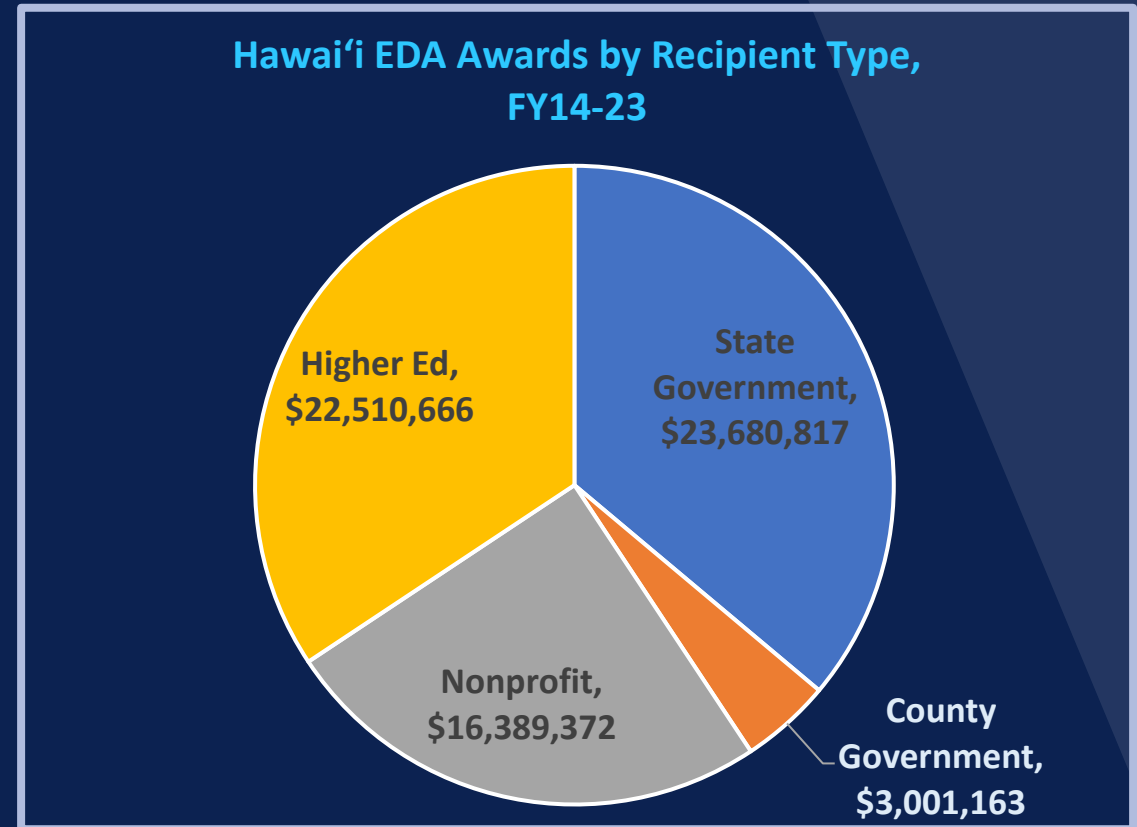
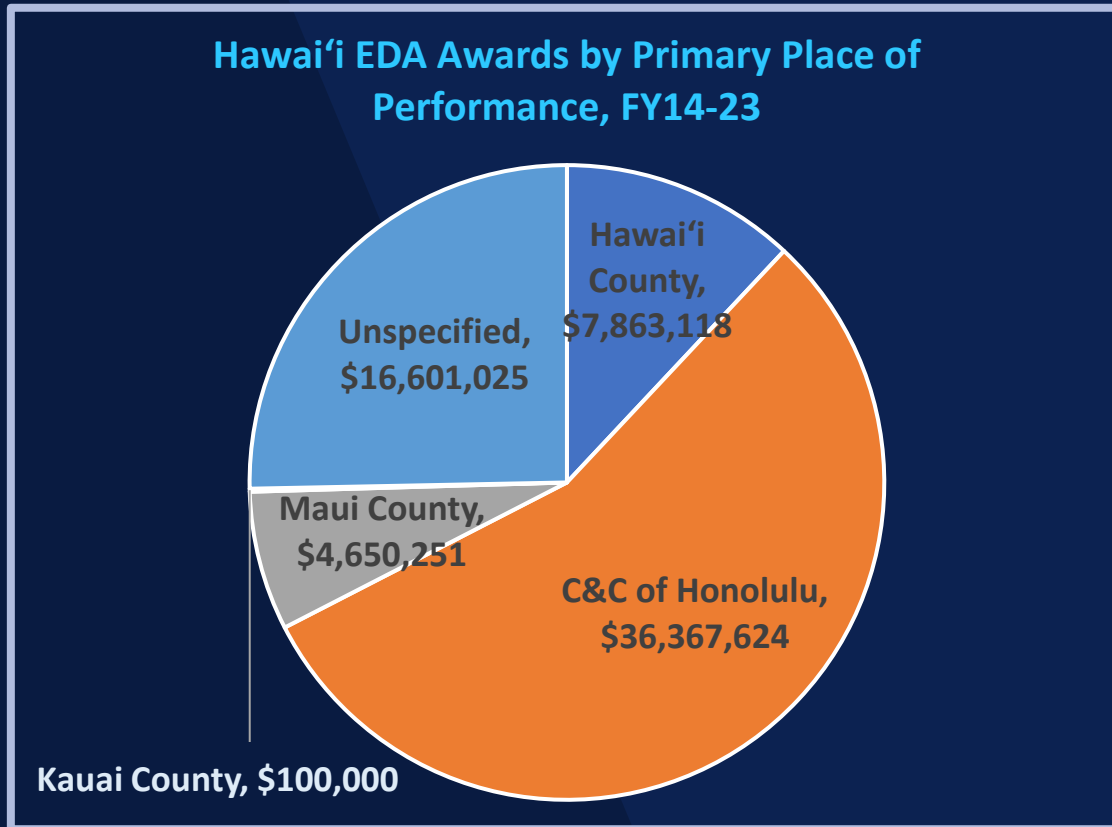
Non-Construction Grants Have Been Steady Resource for Economic Development

EDA Awards to Hawai'i Recipients (thousands \$) by Federal FY



Source: USASpending.gov

EDA Programs Largely Underutilized by County Governments



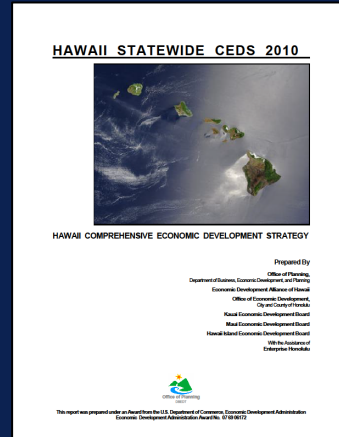
Source: USASpending.gov

Unlocking (More) EDA Funds

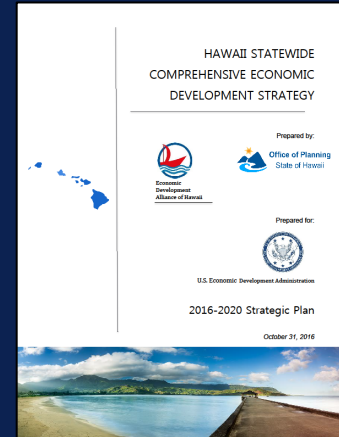
5-Year Comprehensive Economic Development Strategy (CEDS) Plan is Required to Access EDA Funds



2005 Inaugural Plan



2010 Update



2016 Update



2023 Update



Economic Development District (EDD) Designation Unlocks Access to More EDA Funds to Advance Hawai'i's Economic Future



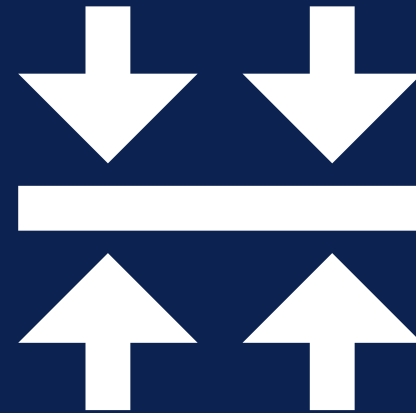
ELIGIBILITY

Broadened eligibility within EDD region (i.e., statewide)



COORDINATION

Persistent planning and implementation coordination



EDA RELATIONSHIP

Reinforces and codifies state's relationship with EDA



CAPACITY

Strengthens local capacity to maximize drawdown of federal funds

Projects Located in EDD Region Receive Majority of EDA Investments

TABLE 3

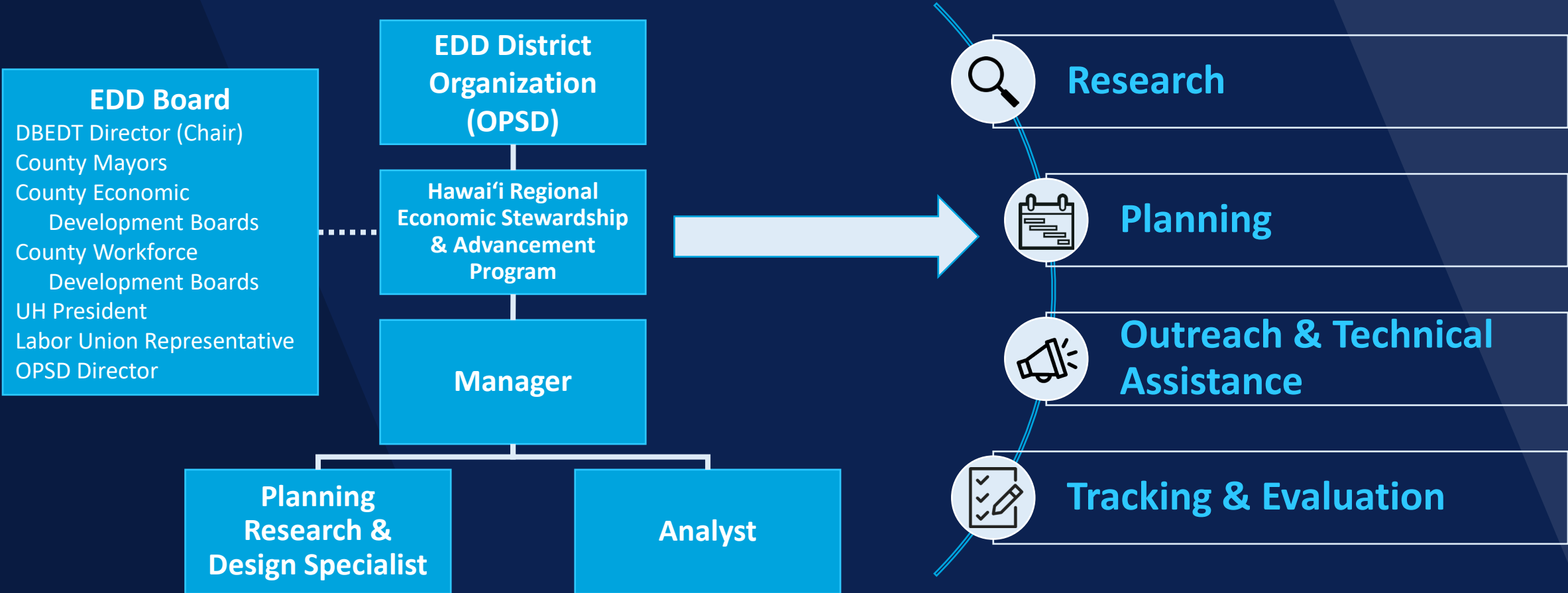
EDA Total Project Investment in Economic Development District, 2010–2021

	Share of total population	Number of grants	Grants per 100,000 people	Total project investment (in millions)	Total project investment per capita
All projects					
Inside an EDD	52%	6,752 (77%)	4.1	\$7,563 (71%)	\$46
Outside an EDD	48%	2,053 (23%)	1.4	\$3,017 (29%)	\$20
Total	100%	9,422 (100%)	3.0	\$10,923 (100%)	\$34
Construction projects					
Inside an EDD	52%	1,421 (79%)	0.9	\$5,229 (74%)	\$32
Outside an EDD	48%	378 (21%)	0.3	\$1,859 (26%)	\$12
Total	100%	1,801 (100%)	0.6	\$7,091 (100%)	\$23
Nonconstruction projects					
Inside an EDD	52%	5,331 (77%)	3.3	\$2,333 (68%)	\$14
Outside an EDD	48%	1,675 (23%)	1.1	\$1,157 (32%)	\$8
Total	100%	7,621 (100%)	2.4	\$3,833 (100%)	\$13

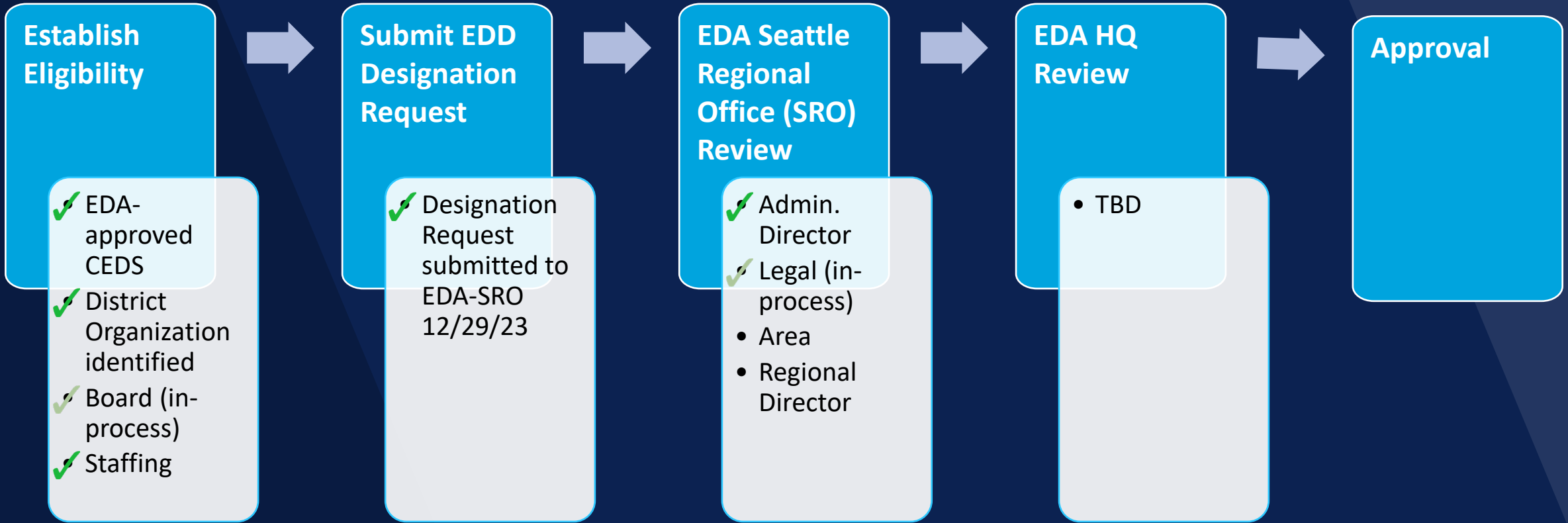
Sources: 2008–2012 American Community Survey and EDA program data.

Notes: All amounts are adjusted for inflation to 2021 dollars. All projects between 2010 and 2021 are included except those with missing geography information (numbering 617 projects). Total rows reflect the totals for each column, including projects with missing geographic information. EDD = economic development district.

EDD Will Strengthen Coordination and Capacity to Maximize Drawdown and Impact of Federal Funds



EDD Designation Process and Status





Mahalo!